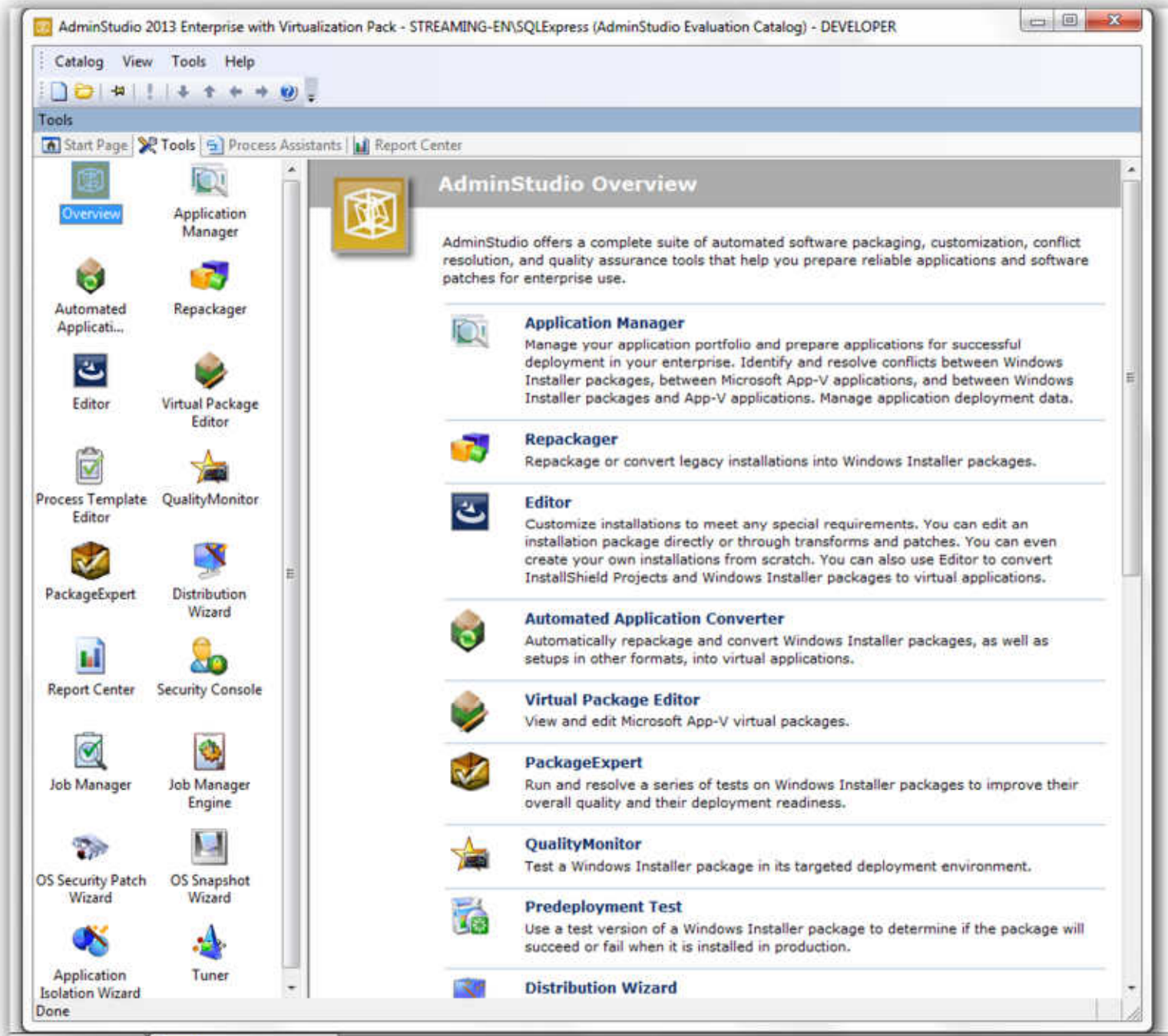


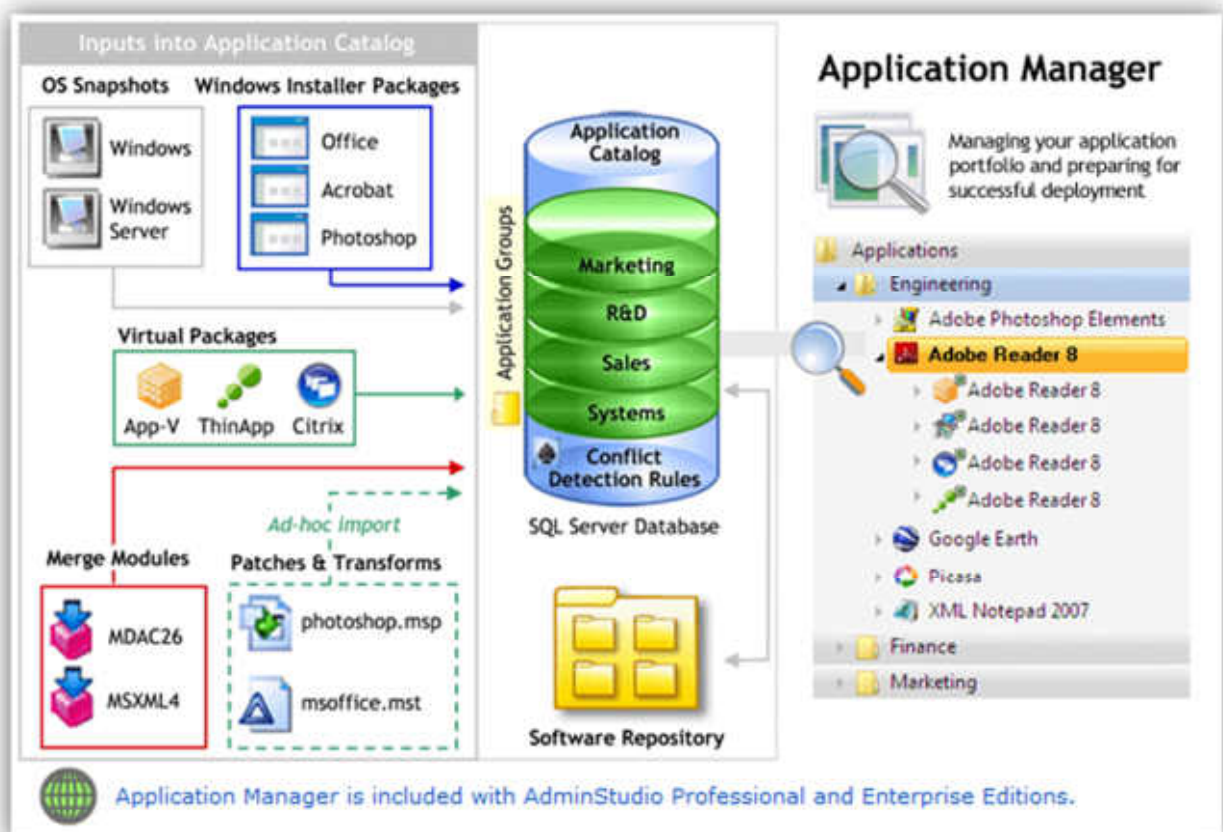
Das AdminStudio beinhaltet eine ganze Reihe von Tools zum Thema Anwendungspaketierung- und Virtualisierung, die wir ihnen nachfolgend zeigen wollen:



Managing Your Application Portfolio

You use **Application Manager** to import applications into a central Application Catalog database repository, which enables you to perform testing to eliminate application conflicts. You can import multiple deployment types for each application including Windows Installer (.msi), Microsoft App-V (.sft), VMware ThinApp (.exe), and Citrix XenApp (.profile). All application data is stored in the Application Catalog, including data generated by AdminStudio operations. Application Manager provides an easy-to-use interface to search for, view, and modify application metadata.

Application Manager can locate and report different types of conflicts that may exist between Windows Installer packages, Microsoft App-V applications, and target operating systems. Using this information, administrators can make appropriate modifications to resolve these issues. In many cases, these issues can be resolved automatically. Application Manager's reporting dashboard provides a continuous view of application readiness, which helps to streamline migration planning

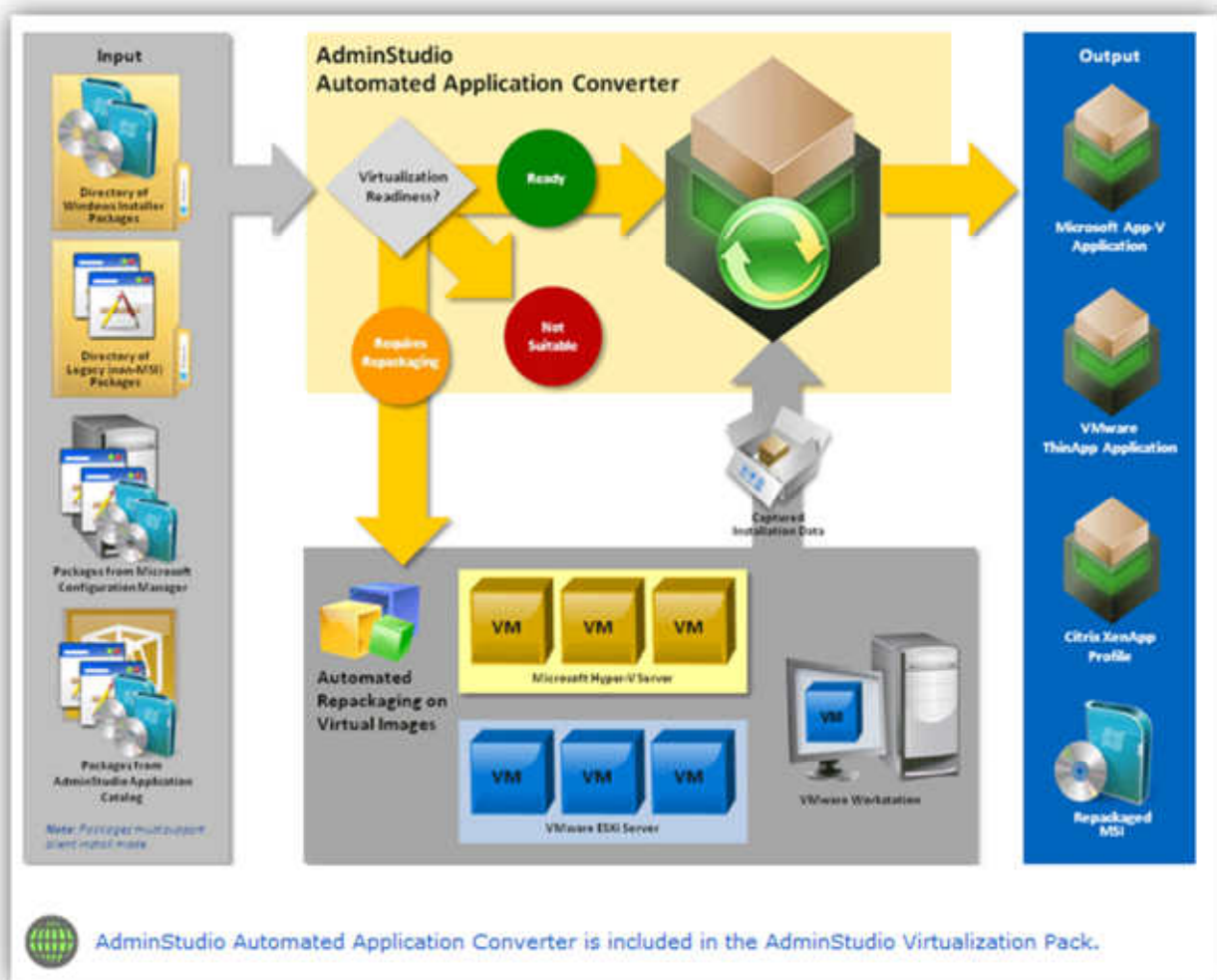


Automatically Batch Convert a Group of Setups to Virtual Applications

The AdminStudio Automated Application Converter enables you to automatically repackage and convert Windows Installer packages, as well as setups in other formats, into virtual applications. You can also choose to use Automated Application Converter to automatically repackage setups into Windows Installer packages.

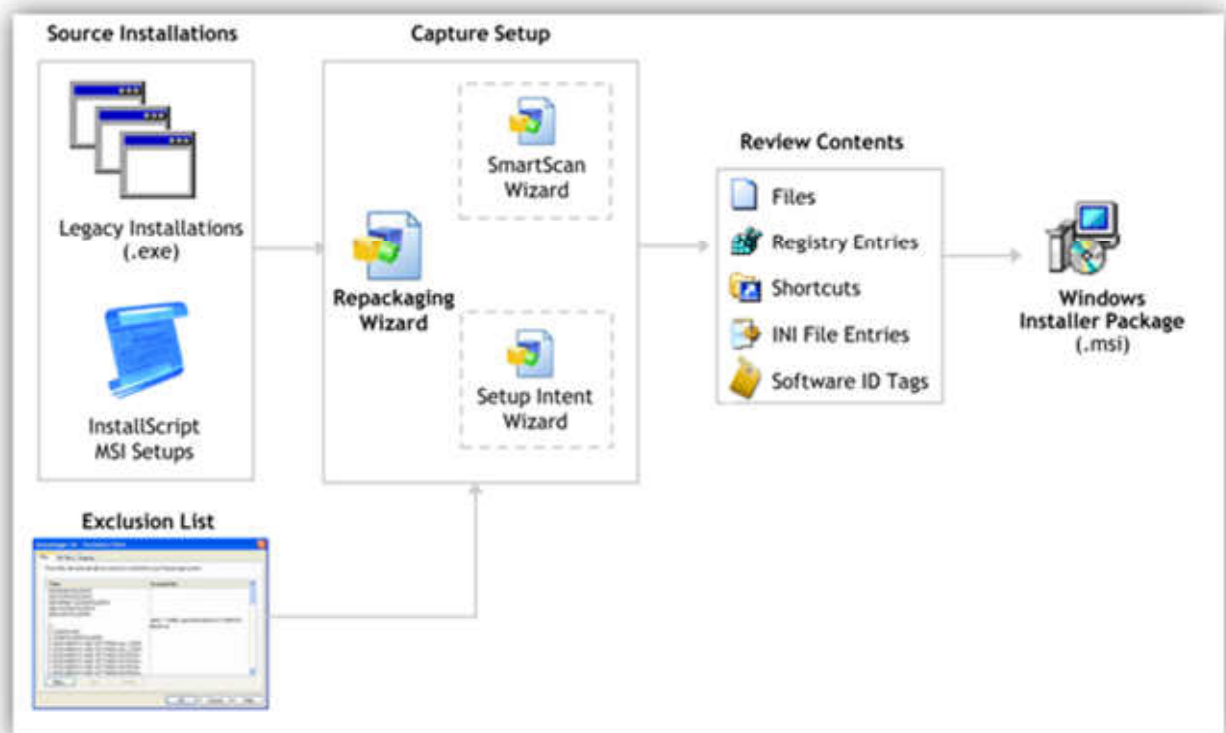
You often need to repackage a Windows Installer package prior to being able to successfully convert it because it is not possible to determine the run-time behavior of certain package elements—such as custom actions, conditional components, and launch conditions—without actually installing the package. The Automated Application Converter examines a group of setups to automatically determine which need to be repackaged and which can be virtualized without repackaging. It converts the setups that can be directly converted and then automatically repackages the others by launching virtual machines, running the setups, and capturing them prior to converting them into the target virtual formats.

AdminStudio Automated Application Converter is included in the AdminStudio Virtualization Pack.



Repackage Legacy Installations

The **Repackaging Wizard** is a tool for capturing legacy installations and creating a Repackager project file. You can then use the Repackager interface to exclude captured data and convert the project into a Windows Installer package. You can convert any type of installation including Microsoft SMS, Novell ZENworks, WinINSTALL, and Wise Installation projects, and even convert an InstallScript MSI setup to a basic MSI setup.



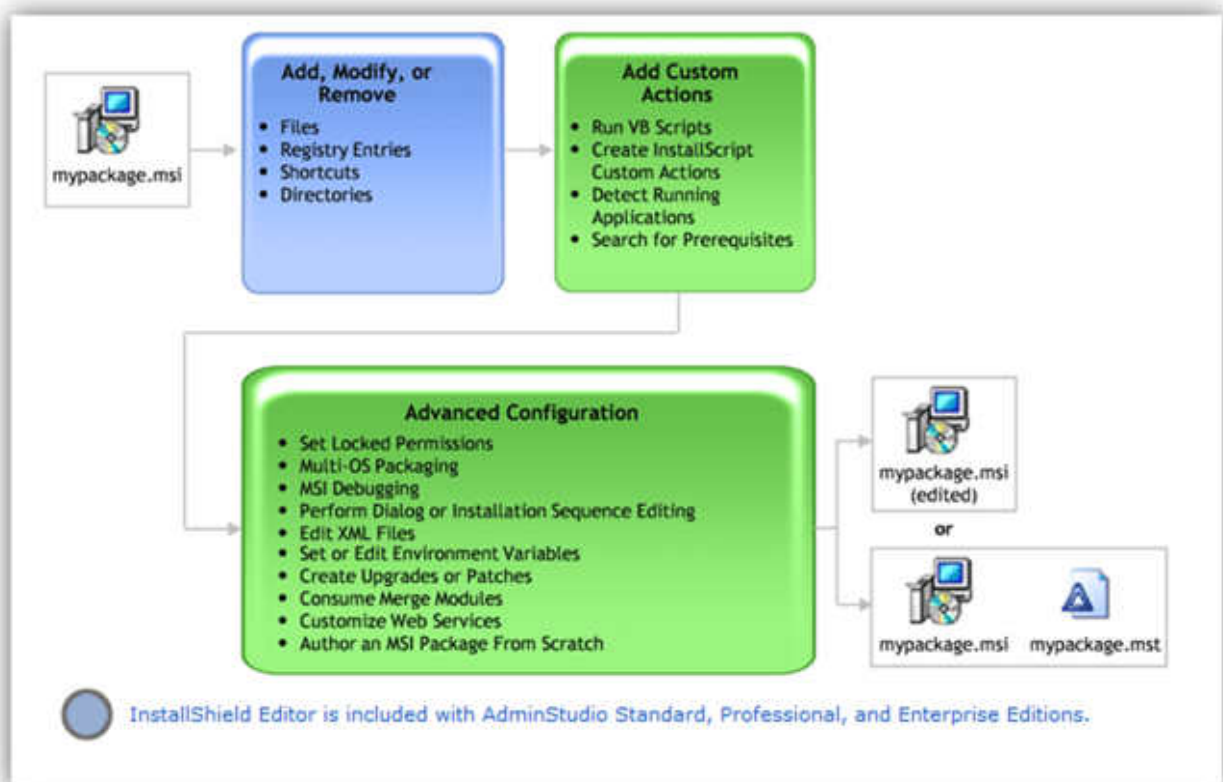
Customize & Author Installations

InstallShield Editor enables you to customize installations to meet any special requirements. You can edit an installation package directly, or through external transforms and patches. You can even create your own installations from scratch.

InstallShield Editor gives you complete control over Windows Installer installations, further enhancing them prior to deployment in production environments. It provides unlimited customization options including the ability to add template files, VBscript custom actions, merge modules and Web services to your installation. Windows Installer packages can be viewed at any level, from the high-level abstracted view to the detailed table-level view. Editing is possible at any level.

Also, you can use InstallShield Editor to create new installations that utilize Windows Installer technology. These installations can target desktops, servers, and mobile devices.

When AdminStudio is purchased with the Virtualization Pack, InstallShield Editor also provides support for the conversion of Windows Installer packages to virtual applications.



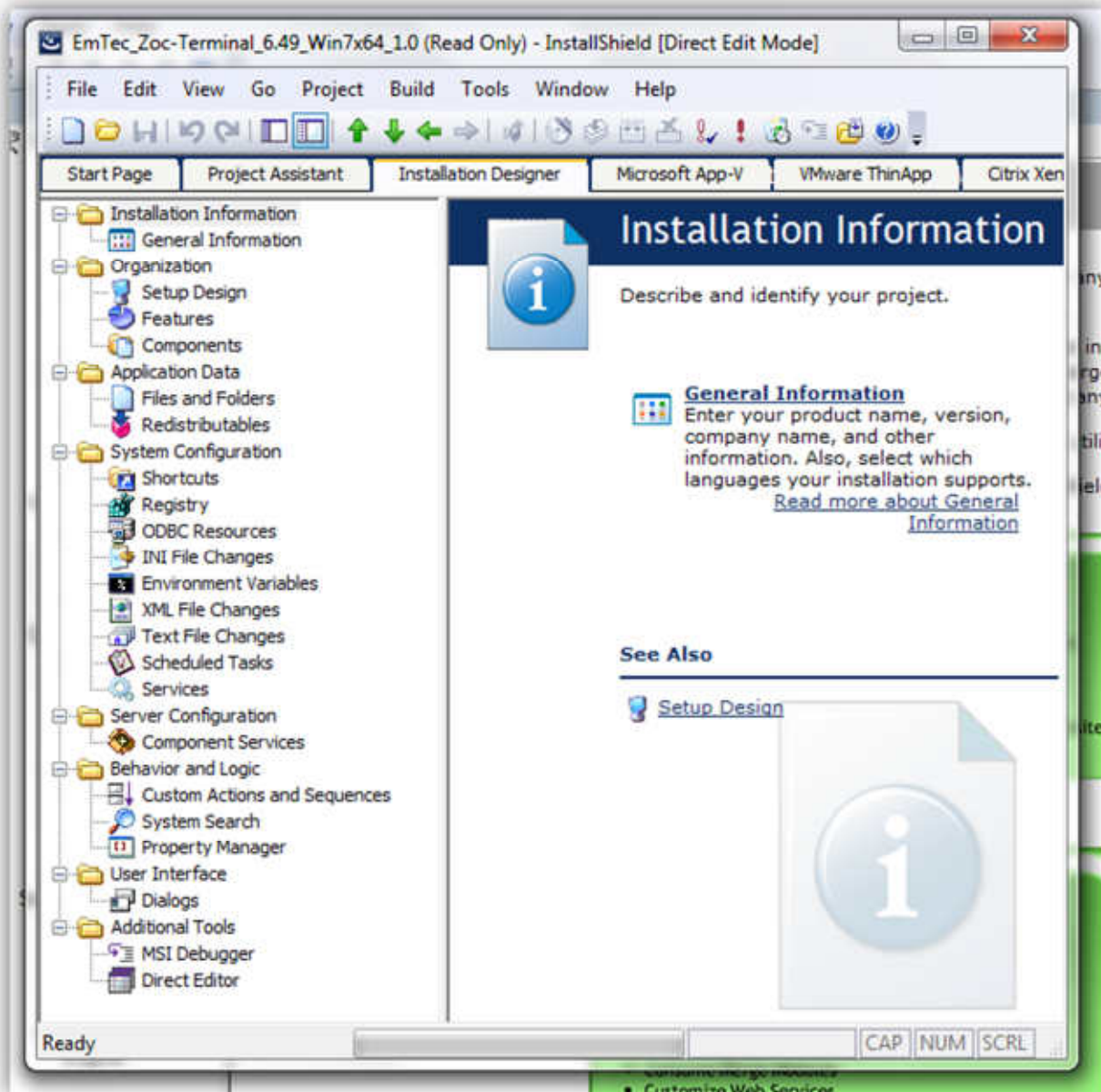


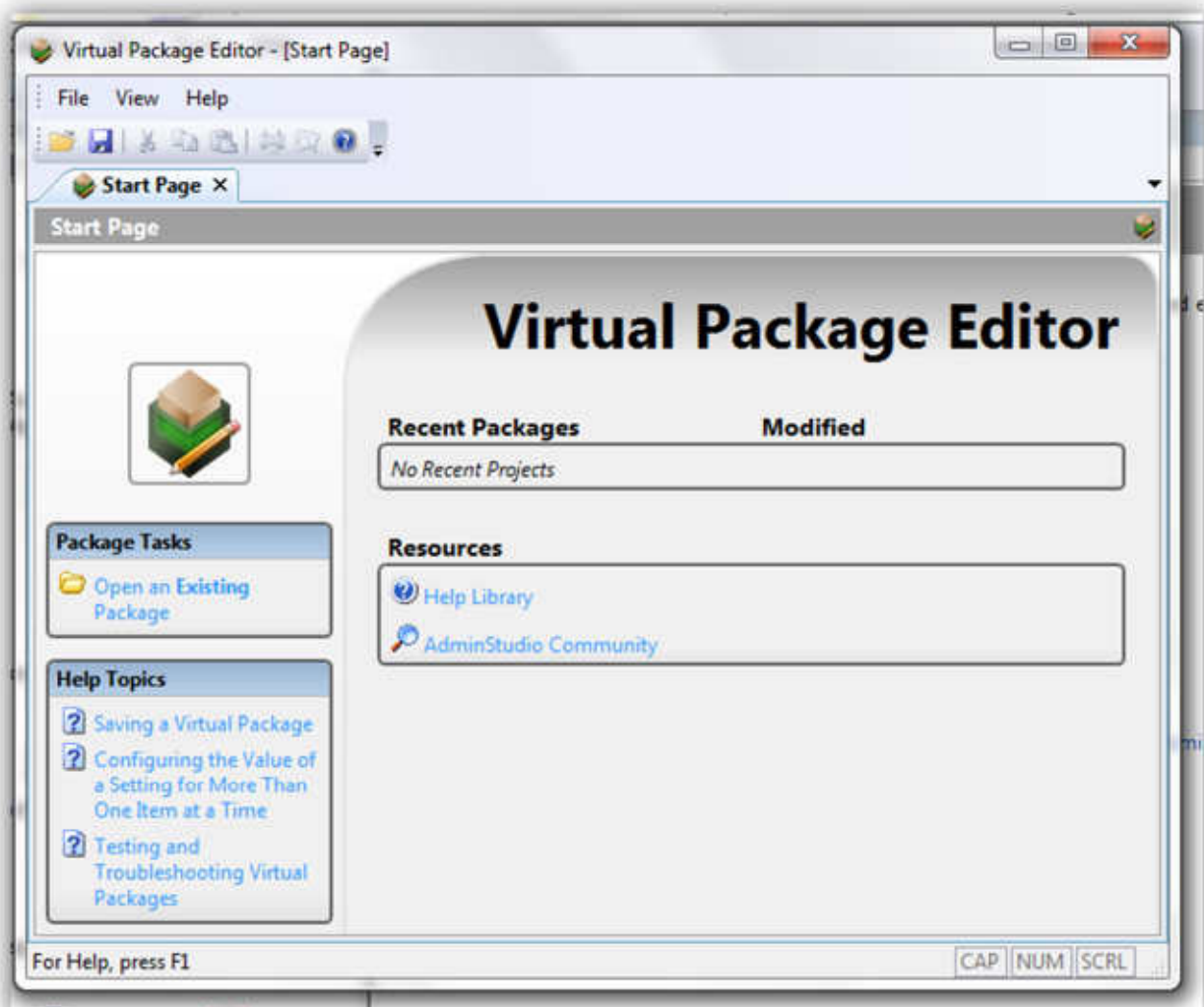
Bild: InstallShield Editor

Edit Virtual Packages

You can use the AdminStudio Virtual Package Editor to view and edit Microsoft App-V packages. The following information can be edited:

- Package settings
- Dependencies
- Files and folders
- Registry entries
- Shortcuts
- Environment variables
- File associations
- Scripts
- Virtual services

AdminStudio Virtual Package Editor is included in the AdminStudio Virtualization Pack.

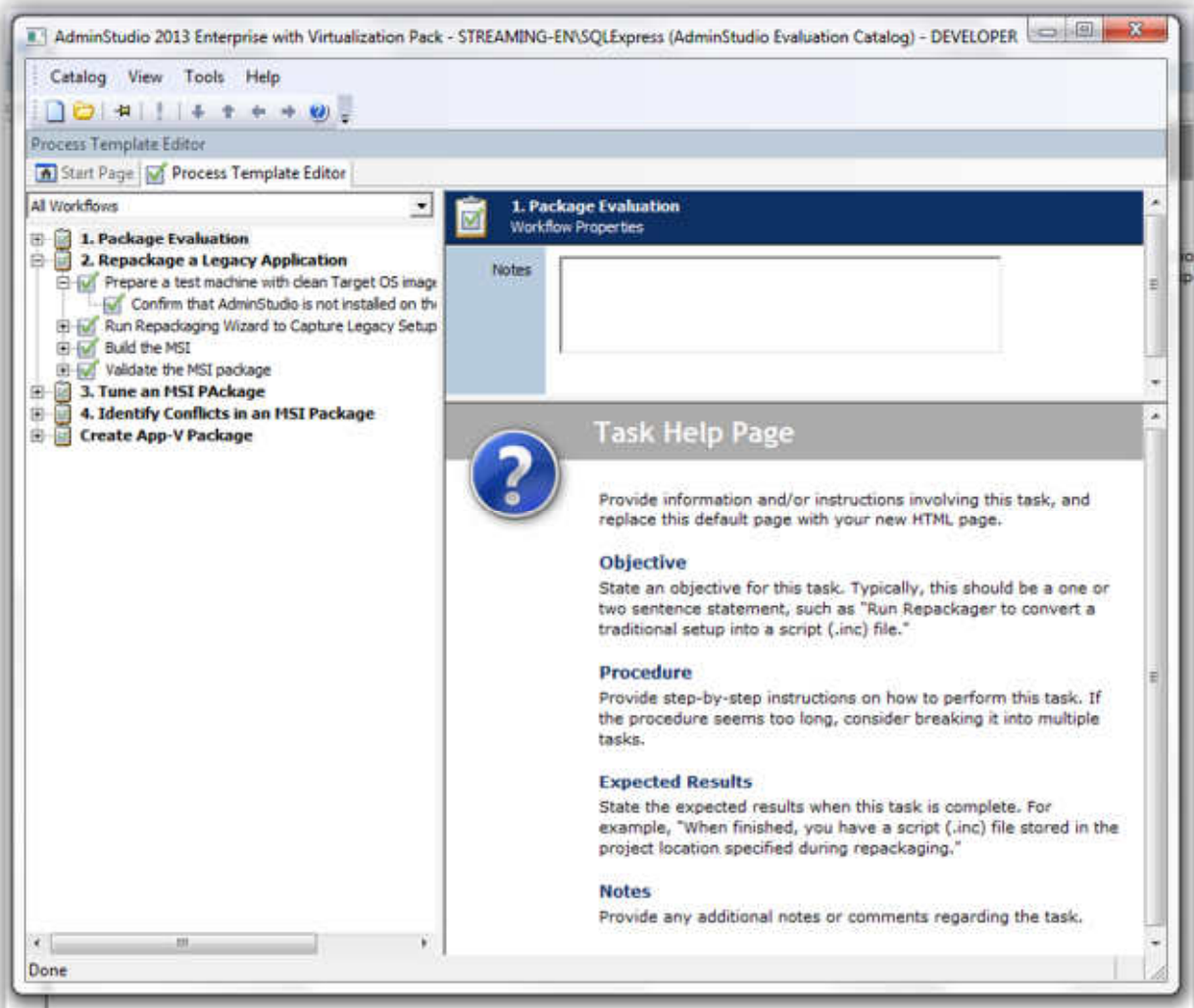


Create New Process Templates

You can use the **Process Template Editor** to create new Process Templates.

Process Templates are the basis for all projects in AdminStudio. These processes consist of defined tasks, with which instructions (in the form of HTML files) and tools can be associated. Users can then create projects based on these processes, and execute them—following the specific defined steps. This allows you to create specific, repeatable procedures to accomplish your application migration goals.

The Process Template Editor is included with AdminStudio Standard, Professional, and Enterprise Editions.

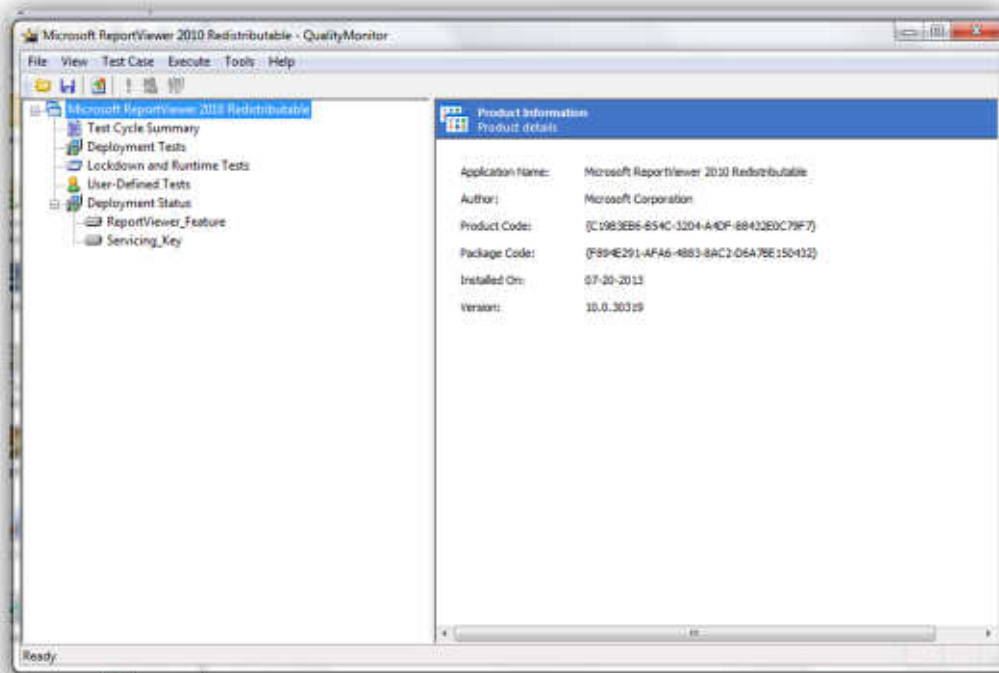
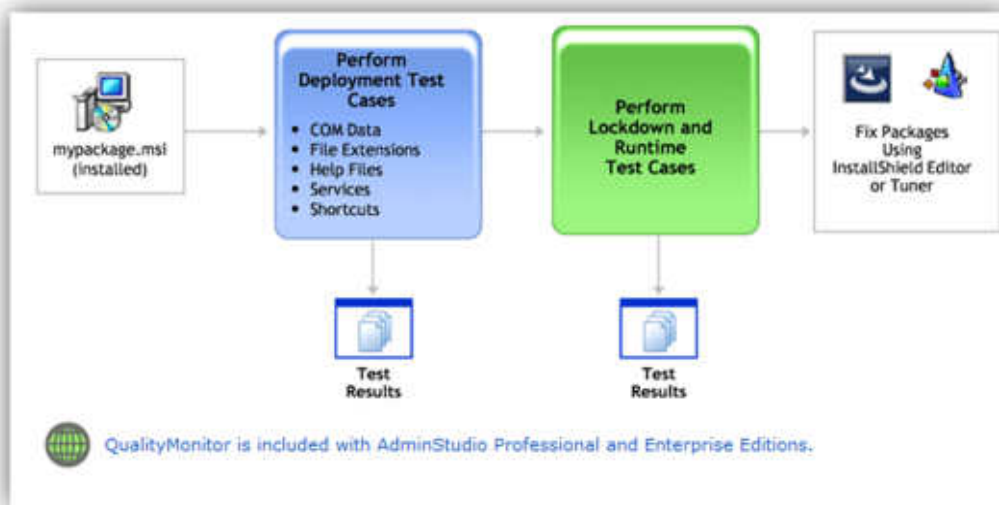


Ensure Package Quality

Prior to deploying a Windows Installer package, typically you need to test it in the targeted deployment environment to ensure the application works as expected. However, it is often not feasible (or possible) to test each piece of an application's functionality, due to the complexity of the application and/or its interface.

One major source of failure is when the target environment is restricted in some way, such as in a locked-down environment. In this case, there may be prohibitions on certain COM activation or registry access, which ultimately prevents an application from working correctly.

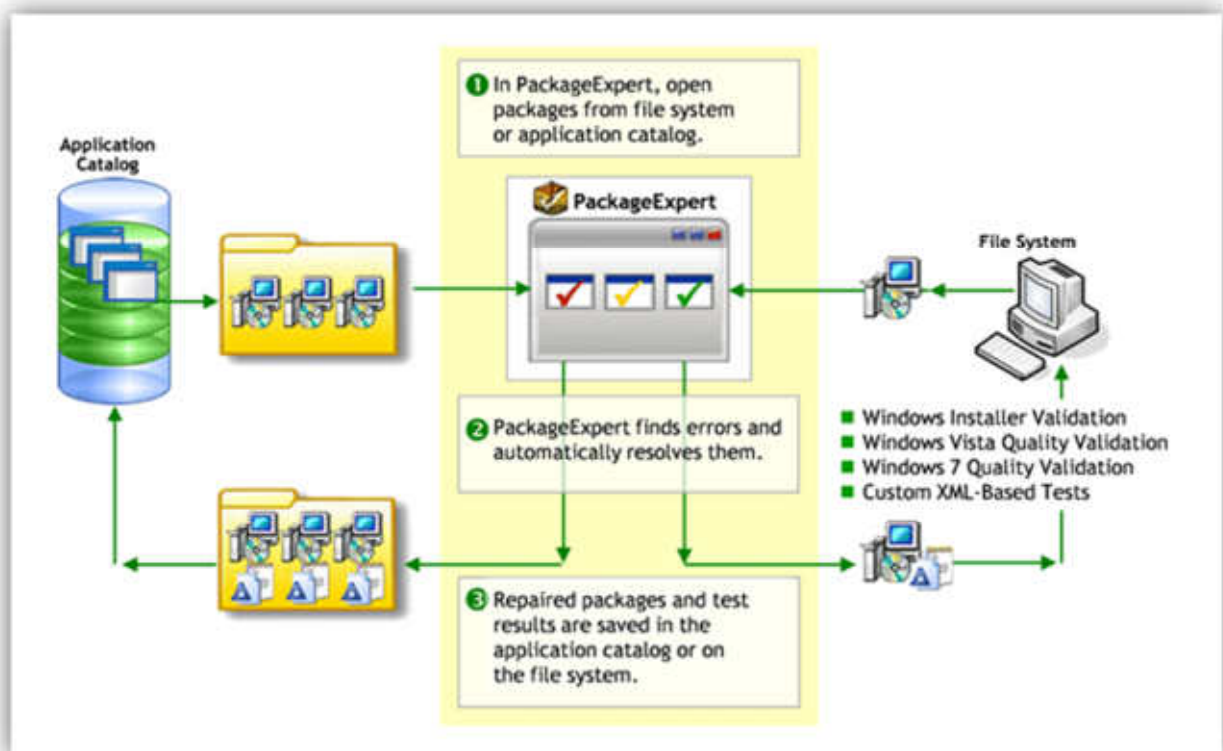
QualityMonitor allows you to run a series of built-in tests against installed Windows Installer-based products, helping to ensure they run correctly. When failures occur, QualityMonitor can help identify where problems lie, and ultimately direct you to a solution.



Automatically Identify and Resolve Package Errors

PackageExpert, one of AdminStudio's powerful testing tools, enables you to quickly run and resolve a series of tests on Windows Installer packages to improve their overall quality and their deployment readiness. PackageExpert provides the flexibility to augment and extend the test suite to suit any particular end user requirement.

PackageExpert's tests are currently organized into three categories: ICE Tests, Vista Certification Tests, and Windows 7 Compatibility Tests. The ICE tests perform checks against the structure of a Windows Installer package to enforce Microsoft best practices. They are used to determine if an installation package is built according to Windows Installer standards. The Windows Vista Certification tests check packages for compliance with installation requirements of the Windows Vista operating system, and are intended to enable the successful deployment of packages on Vista. The Windows 7 Compatibility tests check packages for compliance with installation requirements of the Windows 7 operating system, and are intended to enable the successful deployment of packages on Windows 7.



Differences Between InstallShield Editor and InstallShield Professional Edition

AdminStudio 2013 InstallShield Editor

The InstallShield Editor that is included with AdminStudio 2013 is based upon InstallShield Professional Edition, but it has a slightly different feature set. Those differences are explained here.

Default Project Types

In InstallShield Editor, all non-Windows Installer-based project types are disabled by default. You can enable these additional project types, such as InstallScript, on the InstallShield Editor Options dialog box, which is opened by clicking Options on the Tools menu.

Multilingual Runtime Language Support

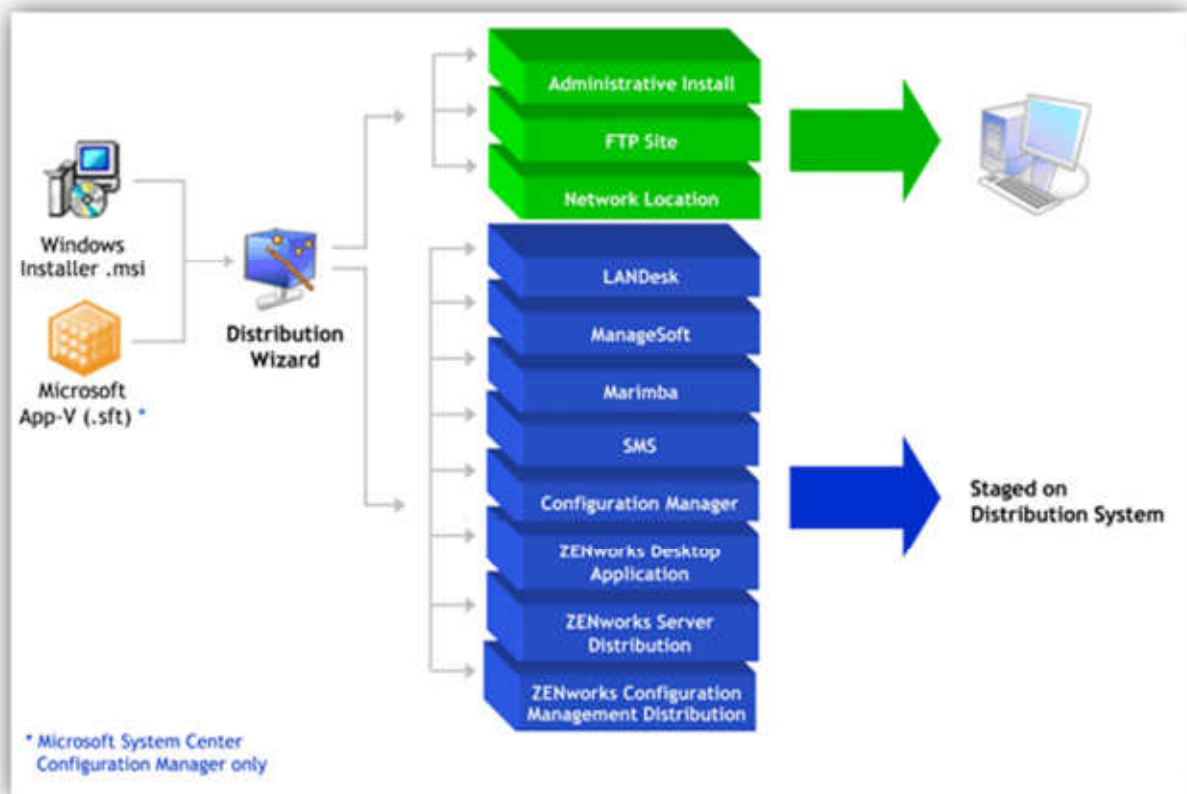
InstallShield Editor includes InstallShield Premier Edition's multilingual runtime language support, which enables you to create a single installation that displays end-user text in multiple languages. If an installation will contain more than one language, you can specify whether to prompt the end user to select the run-time language, or to automatically display the language of the target system's operating system.

Using a Network Repository to Share Project Elements

A repository is a collection of common elements that can be shared and reused in different installation projects, enabling you to ensure consistency. InstallShield Editor includes not only InstallShield Professional Edition's local repository support, but also InstallShield Premier Edition's network repository support, which fosters collaboration among installation authors.

Prepare Packages for Distribution

The **Distribution Wizard** provides a straightforward way to prepare and distribute a Windows Installer package (.msi)—including any associated transforms—using virtually any distribution system. You can also use the Distribution Wizard to distribute a package as an administrative installation, to a network location, or to an FTP server.





Prepare Packages for Distribution

The **Distribution Wizard** provides a straightforward way to prepare and distribute a Windows Installer package, including any associated transforms—using virtually any distribution system. You can also use the Distribution Wizard to distribute a package as an administrative installation, to a network location, or to an FTP server.

Distribution Wizard

Distribution Type
Specify the type of distribution.

Specify the type of distribution you want to perform from the given list and click **Next** to proceed.

Distribution Type:

- FTP Location
- System Center Configuration Manager**
- System Center Virtual Machine Manager
- ZENworks Configuration Management Distribution
- ZENworks Desktop Application
- ZENworks Server Distribution
- ManageSoft
- Atkins
- LANDesk
- Marimba
- FTP Location
- Network Location
- Administrative Install

< Back Next > Cancel Help

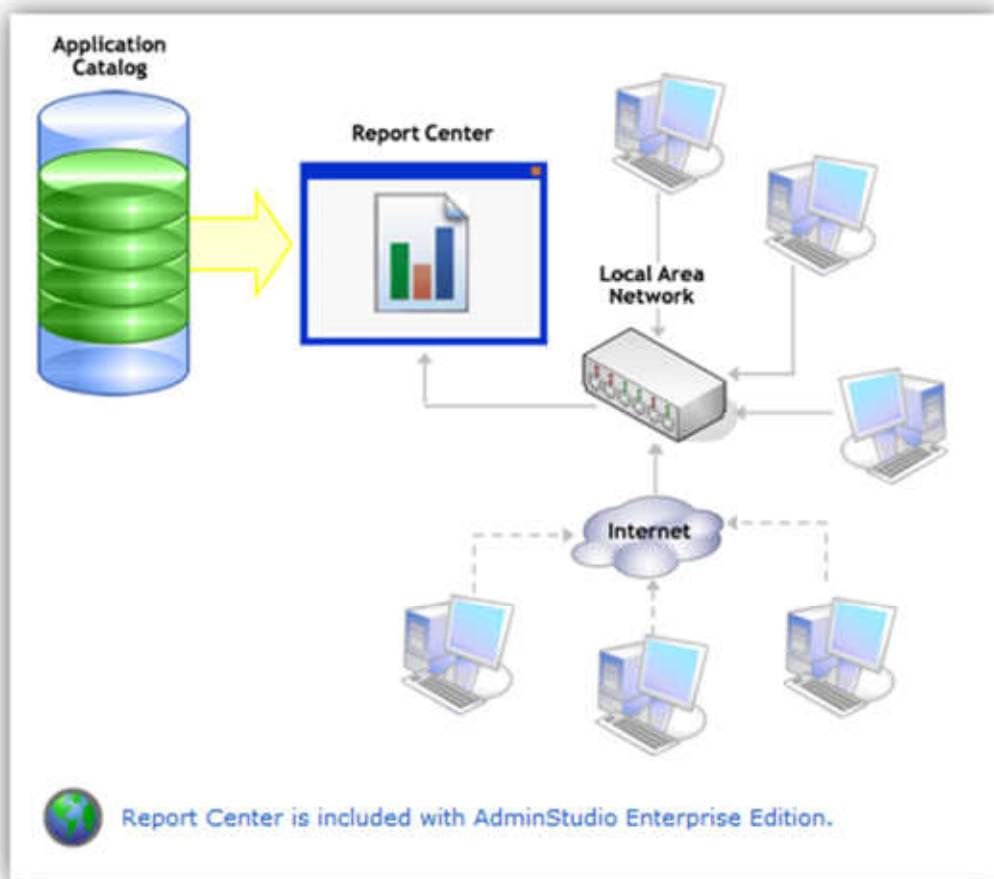


Staged on
Distribution System

Generating and Viewing Reports with Report Center

Report Center is a Web-based application that allows you to report on or view all of the information regarding the applications in your Application Catalog from a single location. It enables you to provide a centralized view of your applications to a geographically dispersed workforce.

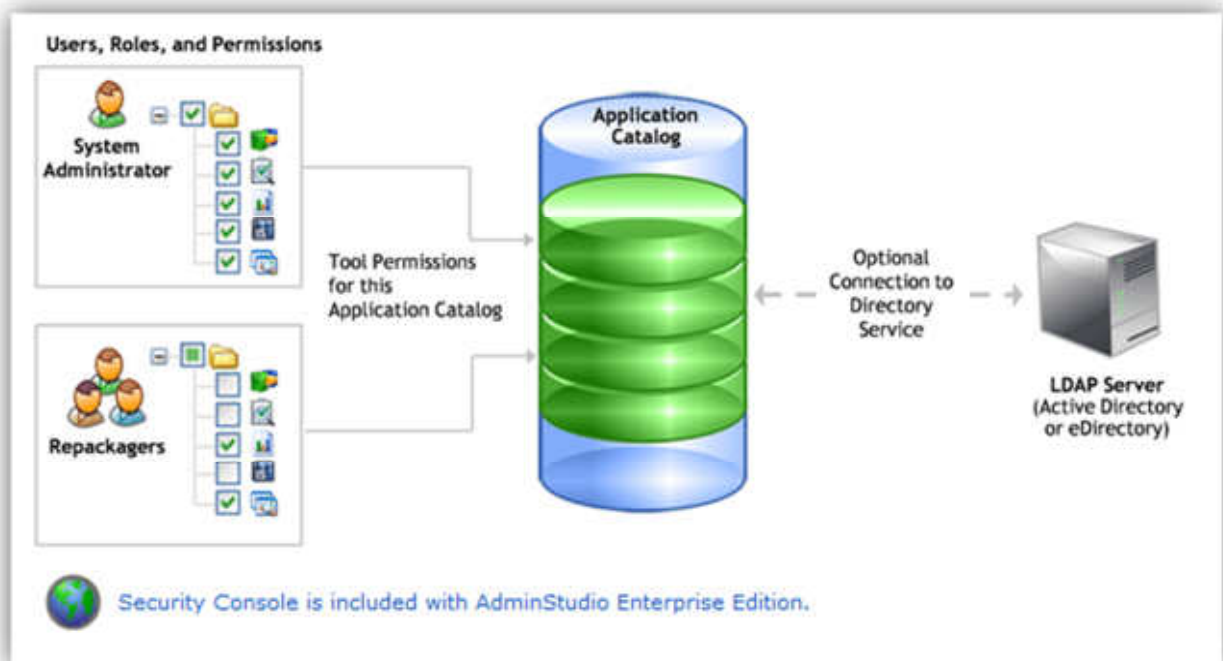
You can generate predefined reports or build custom reports using a query builder, and you have the option to save queries for later use. You can select multiple packages in an Application Catalog and generate reports on them, giving you catalog-level reporting capability.



Defining Users and Roles

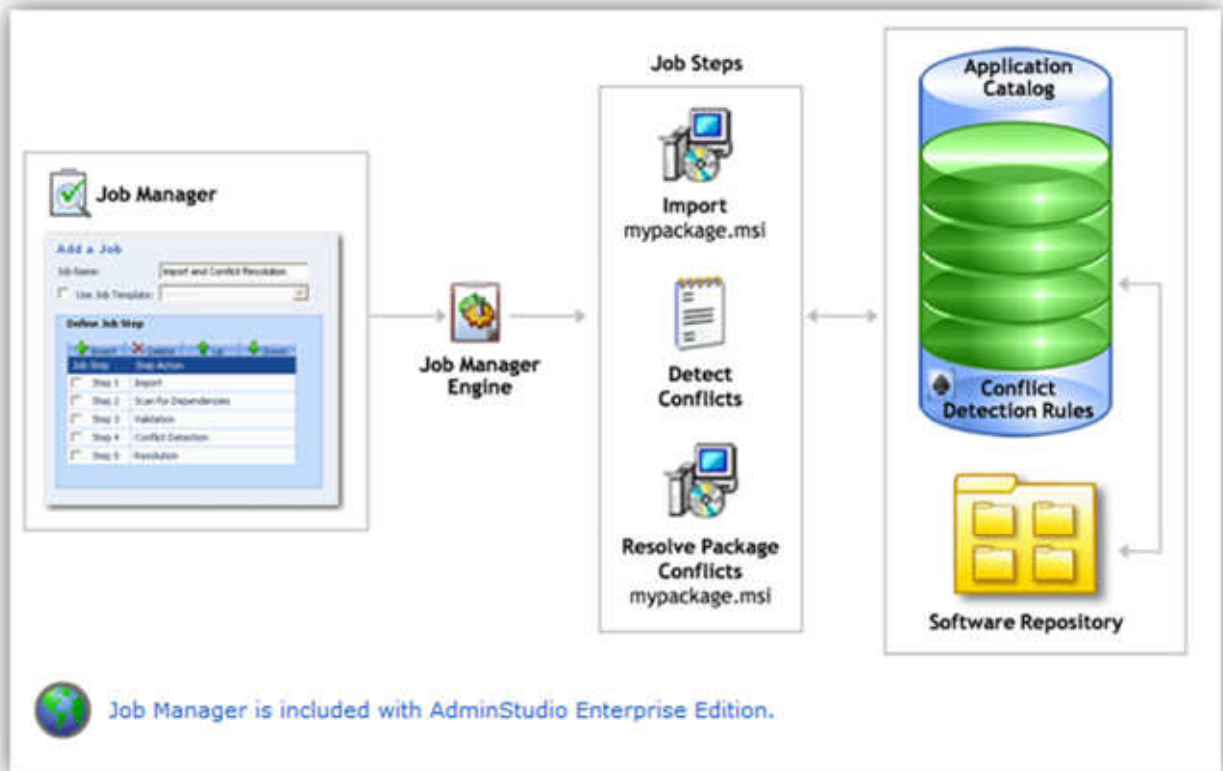
When using the AdminStudio Enterprise Edition, you use the **Security Console** to define the roles and privileges that users and groups will have on a given Application Catalog (referred to as a "managed" catalog). The AdminStudio client tools then communicate with the AdminStudio Enterprise Server to authenticate users and authorize users to perform certain tasks.

To access the Security Console, make sure you are connected to a managed Application Catalog and you have the proper permissions.



Using Job Manager to Automate Tasks

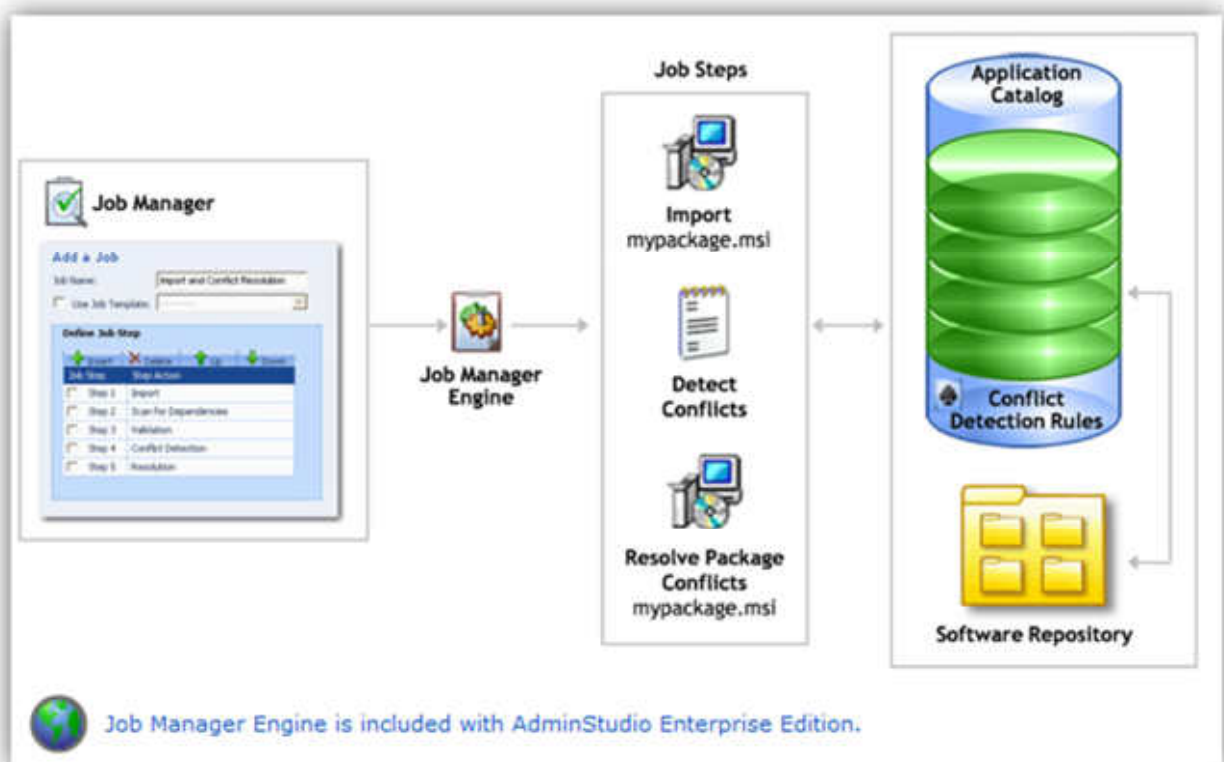
You can use **Job Manager** to automate time consuming tasks, saving you time and enabling you to enforce standardized business practices on the packaging process. The types of tasks that you can automate include: package import, dependency scanning, conflict detection, validation, report generation, and directory monitoring.



Running Jobs with Job Manager Engine

Job Manager Engine is a Windows application that executes Jobs created with Job Manager. It can connect to any of the Enterprise-enabled Application Catalogs in your network and configure and manage the server options related to how the various Job Steps will operate. Job Manager Engine can be connected to multiple Application Catalogs at once, and multiple instances of Job Manager Engine can run on a network.

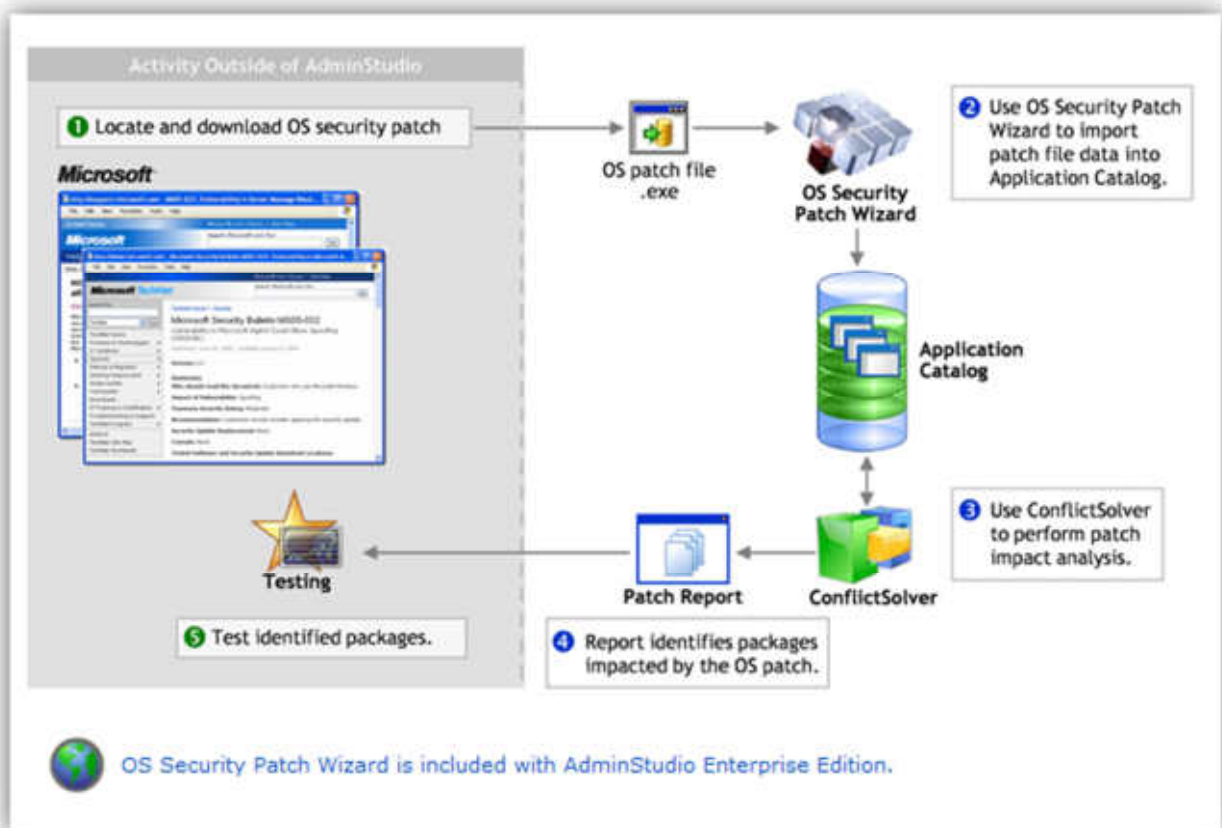
When the Job Manager Engine is open, it automatically executes all of the Running-status Jobs in all of the Application Catalogs that it is connected to. From Job Manager Engine, you can pause, shut down, and restart Application Catalog Jobs.



Analyze the Impact of Installing Microsoft Patches

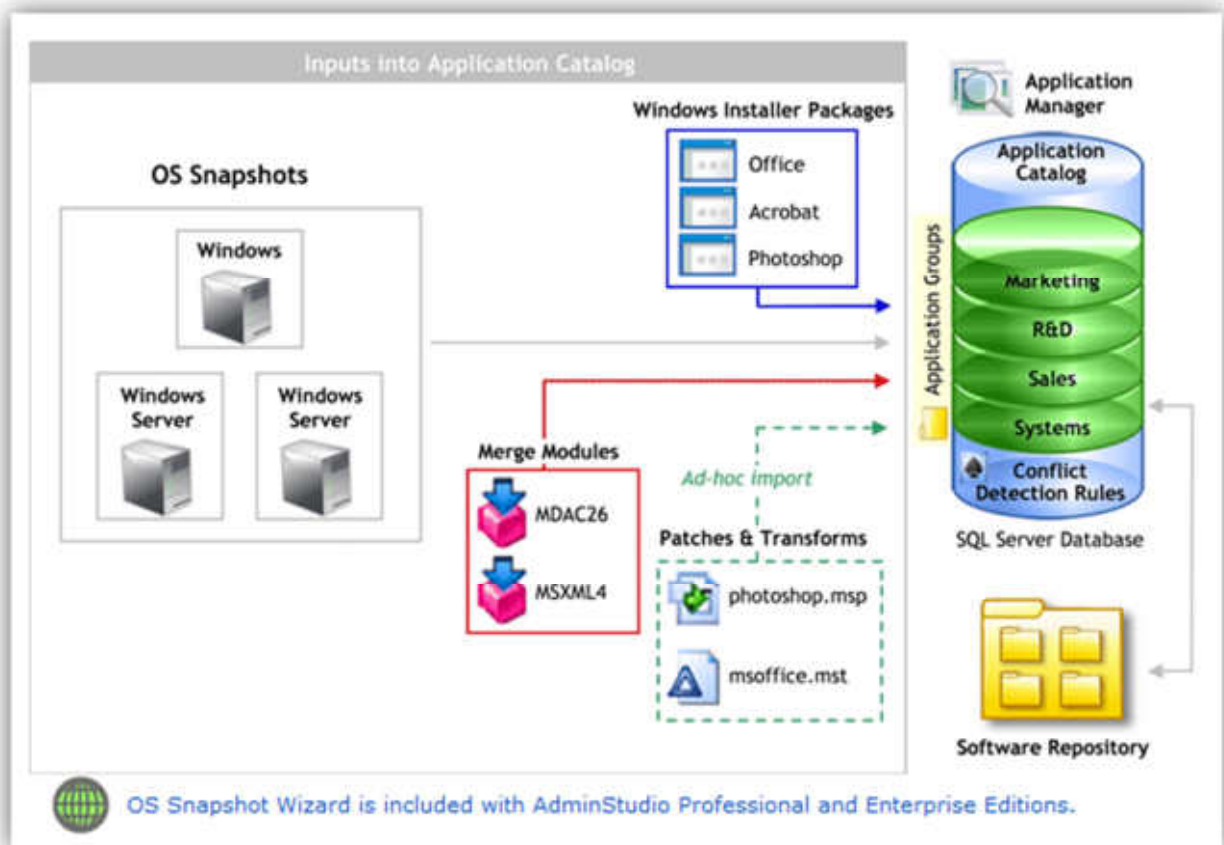
Use **OS Security Patch Wizard** to import Microsoft Windows operating system patches into the Application Catalog so that you can test the impact they will have on your environment before they are deployed. When you select the patch to import, you are prompted to review the imported data and to add information from the patch's Security Bulletin.

After you import the patches, you can use the ConflictSolver Patch Impact Analysis Wizard to identify conflicts between Microsoft operating system patches and the packages and OS Snapshots in your Application Catalog. This helps you determine how specific MSI packages or OS Snapshots would be affected when a Microsoft OS patch is installed.



Capture OS Snapshots

The **OS Snapshot Wizard** provides a simple way to capture your basic operating system configuration. You can import this snapshot into the Application Catalog database so that you can use ConflictSolver to identify potential conflicts between Windows Installer packages and your operating system.

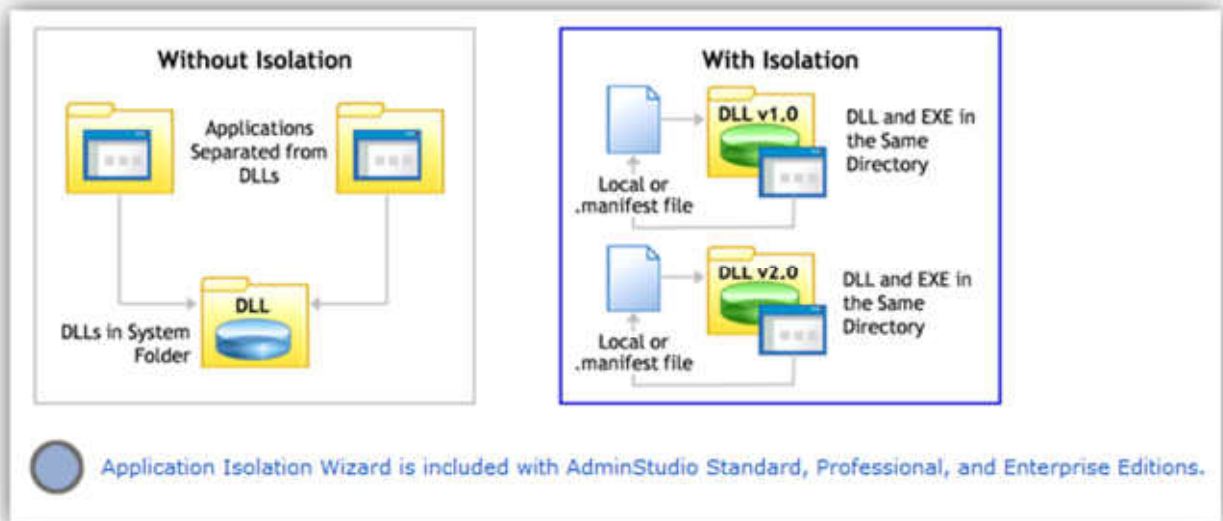


Isolate Applications

The **Application Isolation Wizard** takes advantage of new functionality available in Windows XP. This wizard assists you in eliminating shared DLL and COM component conflicts quickly and easily, allowing you to isolate individual components within a Windows Installer package using Win32 assemblies.

You would want to isolate an application if:

- You want to resolve incompatibilities between different versions of shared components.
- You want to reduce the complexity of the installation by storing COM activation data in a manifest instead of the registry.
- You want to insulate the application from changes to shared components.



Customize Installations

Using **Tuner**, you can create transforms to customize Windows Installer packages, including limiting the features installed, adding custom files to the package, and setting property values. You can also make multiple customized installations of the same application by creating multiple transforms from the same base Windows Installer .msi file, drastically reducing the time to deployment.

